



SCIENCE

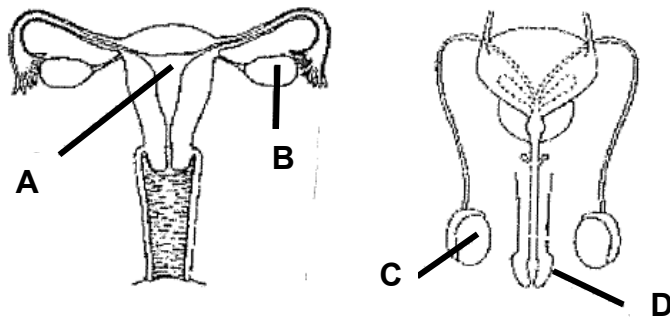
Term 4 Revision

P5 SCIENCE



Booklet A: Multiple Questions

1. The diagrams below show the human reproductive systems.

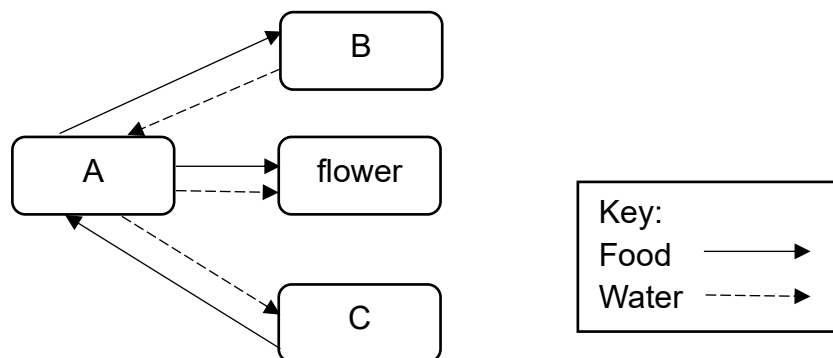


Which two parts, A, B, C or D, produce cells that will fuse together to develop into a baby?

- (1) A and C
- (2) A and D
- (3) B and C
- (4) B and D

()

2. The diagram below shows how water and food are transported in a plant.



Which one of the following shows the parts of the plant correctly?

	A	B	C
(1)	stem	leaves	roots
(2)	stem	roots	leaves
(3)	leaves	roots	stem
(4)	roots	leaves	stem

()

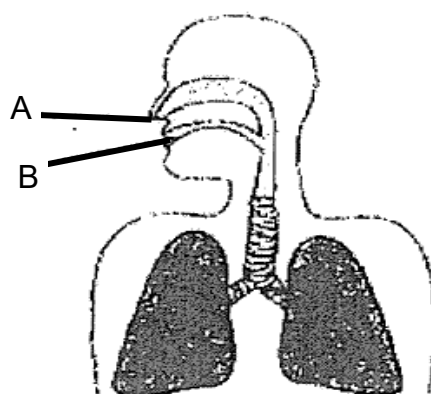
3. Richelle measured the oxygen concentration of the water in her fish tank. The oxygen concentration in the water was below the normal levels and the fishes behaved differently.

Which of the following best describes the behaviour of fishes and its explanation?

	Rate of opening and closing of mouth	Explanation
(1)	increase	The fish needs to release less carbon dioxide through its mouth.
(2)	increase	The fish needs to breathe more to take in enough oxygen for it to be alive.
(3)	decrease	The fish does not need to take in so much oxygen as the water has lesser oxygen concentration.
(4)	decrease	The fish does not need to give out so much carbon dioxide.

()

4. In the air-conditioned school library, Aaron breathes in air through his nose at A and breathes out air through his mouth at B as shown in the diagram below.



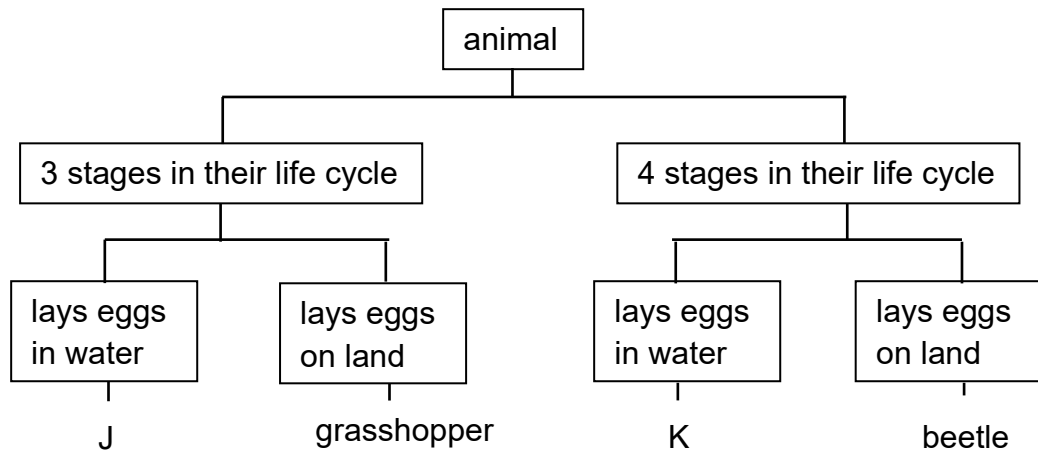
Which of the following statements about air at A and B is true?

- (1) The air at A is warmer than the air at B.
- (2) The air at A has more nitrogen than the air at B.
- (3) The air at A has less water vapour than the air at B.
- (4) The air at A has more carbon dioxide than the air at B.

()

Booklet B: Open Ended Questions

5. Study the diagram.

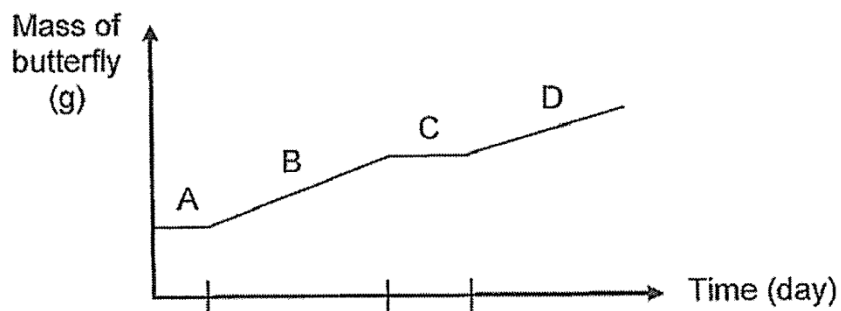


(a) Based on the diagram, state one similarity and one difference between animals J and K. (2m)

(i) Similarity: _____

(ii) Difference: _____

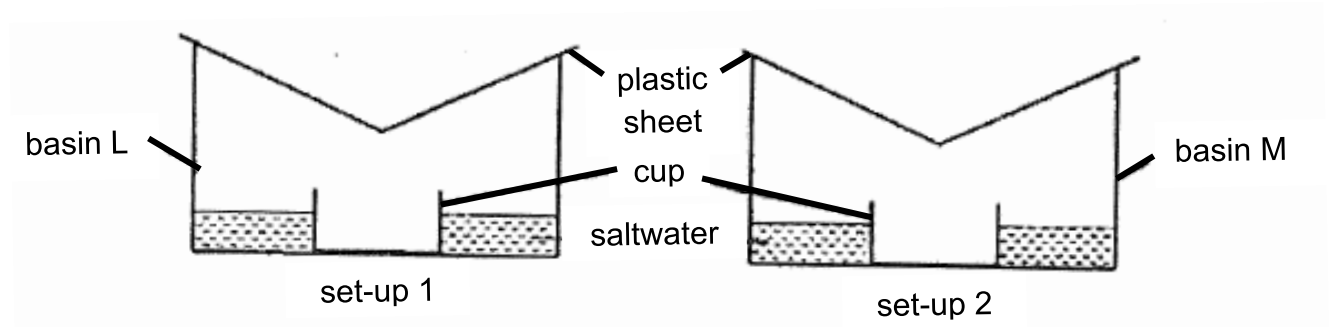
The graph shows the mass of a butterfly at different stages of its life cycle.



(b) Name stage C of the life cycle of the butterfly. Give a reason why there is no gain in mass during stage C. (1m)



6. Judy placed two identical cups into two basins, L and M. Basins L and M are of the same size but made of different materials. She filled the basins with equal amount of saltwater and covered both set-ups with identical plastic sheets. Then she placed them under the sun for a few hours.



After a few hours, she found substance Q in both cups.

- (a) What was substance Q? (1m)

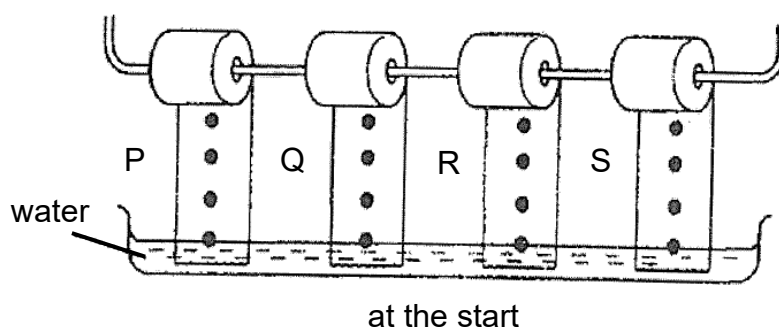
- (b) State the two processes that took place for substance Q to form. (1m)

- (c) Basin L is made of a better conductor of heat. Explain why this would cause more substance Q to be collected in the cup. (2m)

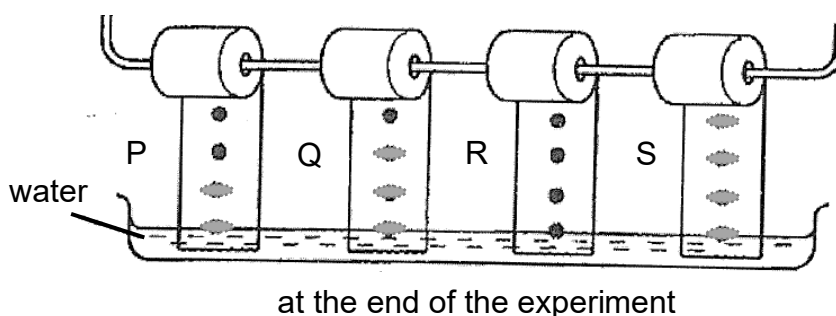
- (d) Suggest what Judy could add to the plastic sheet so that more of substance Q could be collected in the same amount of time for both set-ups. (1m)

7. Masha conducted an experiment using four different types of fabric, P, Q, R and S. She wanted to find out which fabric could absorb the most amount of water.

She prepared four strips of the same length from each type of fabric. She dotted water-soluble ink at equal intervals and hung the strips in a trough of water as shown in the diagram.



She observed that as the strips absorbed water, the dots of ink smudged as shown in the diagram.



- (a) Arrange the four types of fabric (P, Q, R and S) in order of their ability to absorb water, beginning with the fabric that is least water absorbent. (1m)

Least water absorbent , , , Most water absorbent

- (b) Masha then cuts out a strip from her raincoat and repeated the experiment. Would the dots of ink on the strip smudge? Explain your answer. (1m)
