



SCIENCE

P4 EOY Revision

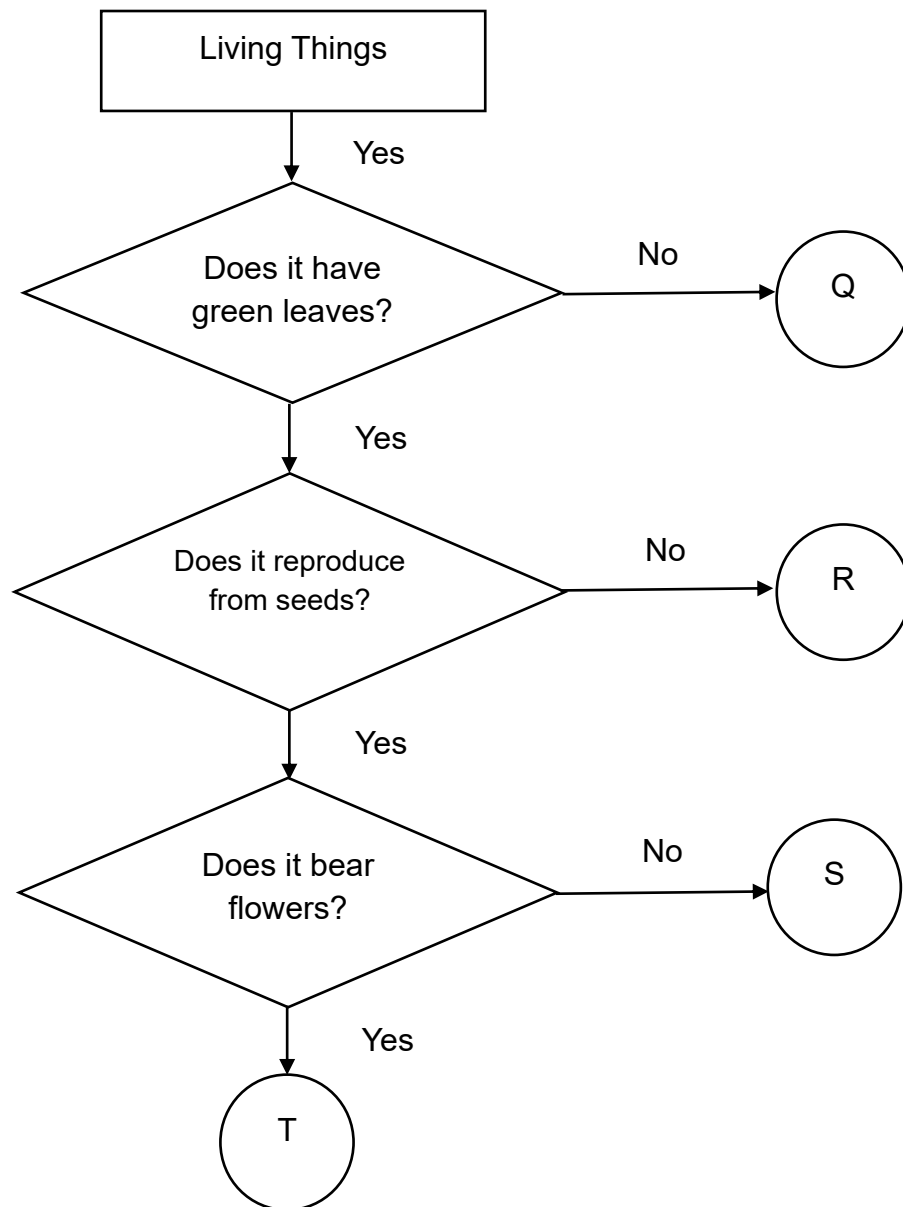
P4 SCIENCE



Booklet A: Multiple Questions

Choose the most suitable answer and write its number in the brackets.

1. Study the flow chart below.

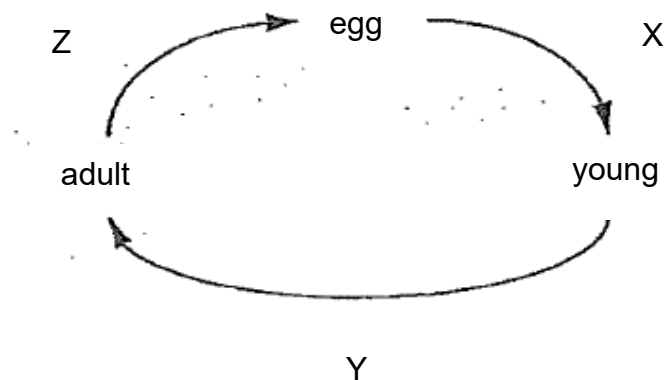


Which of the following plants, Q, R, S or T, best represents a fern?

- (1) Q
- (2) R
- (3) S
- (4) T

()

2. The diagram below shows the life cycle of living thing P. The time taken from one stage to another stage is represented by the letters X, Y and Z.



Study the three statements made.

A: P lives on land.

B: The young of P resembles the adult.

C: Y represents a longer time compared to X and Z.

Which statement(s) is/are true?

(1) A only

(2) B only

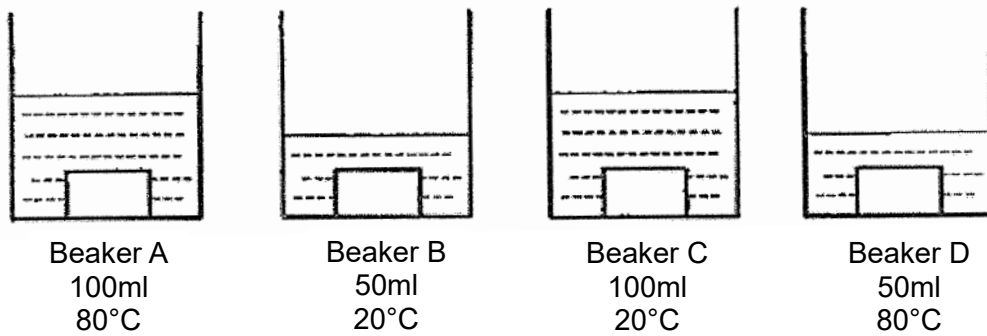
(3) B and C only

(4) None of the above

()



3. Four metal blocks were heated to a temperature of 80°C . Each block was dropped into a beaker of water. Each beaker contained a different amount of water, at a different temperature, as shown below.

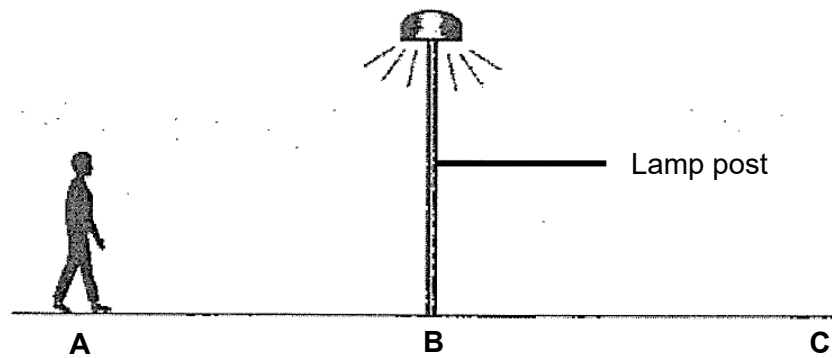


In which beaker would the water show the largest increase in temperature?

- (1) A
- (2) B
- (3) C
- (4) D

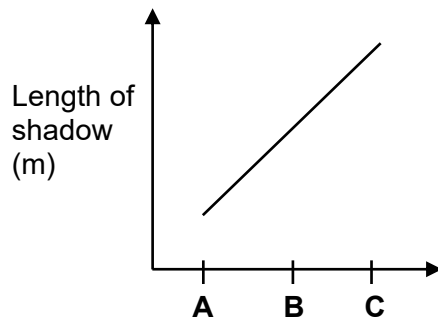
()

4. One night, Alan was walking from point A to C, passing a lamp post at point B as shown in the diagram below.

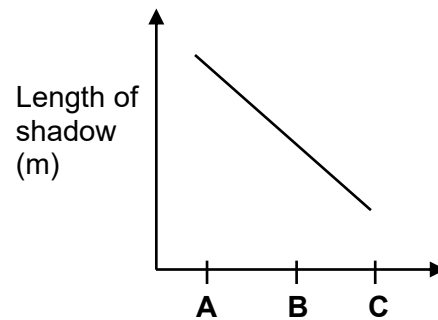


If the only light source nearby was the lamp post, which one of the graphs below shows how the length of Alan's shadow changed from points A to C?

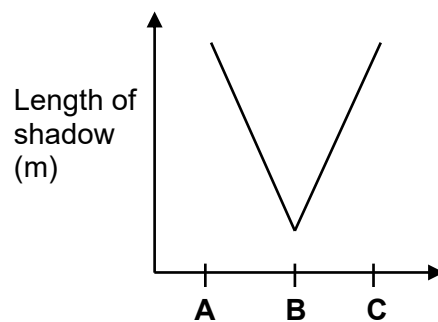
(1)



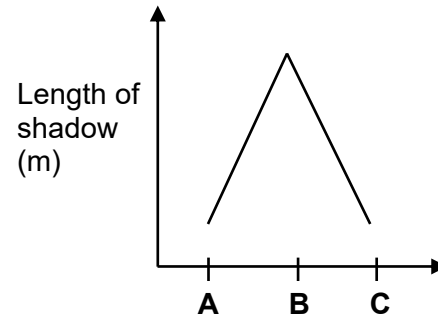
(2)



(3)



(4)



()

Section B

Write your answers in the spaces provided.

5. The diagram below shows a bag of potato chips.



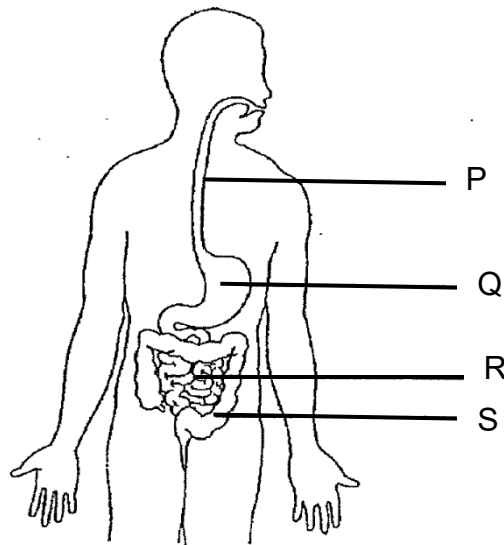
- (a) Name the 2 states of matter found inside the bag. (1m)

- (b) The mass of the bag of potato chips is 150 grams.
Will the mass of the potato chips be **greater than**, **equal to** or **less than** **150 grams**? (1m)

- (c) Explain your answer in (b). (1m)



6. The diagram below shows the human digestive system.



(a) Observe the diagram above and name the parts of the digestive system represented by letters, P and Q. (2m)

Part P: _____

Part Q: _____

(b) What is the function of part S? (1m)

(c) In which part(s), P, Q, R and S, will digestive juices be produced? (1m)
