



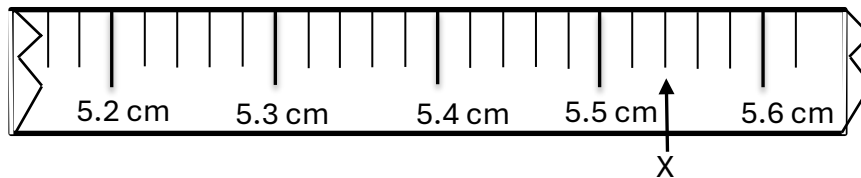
Term 3 Revision

P6 MATH



Section A – MCQ

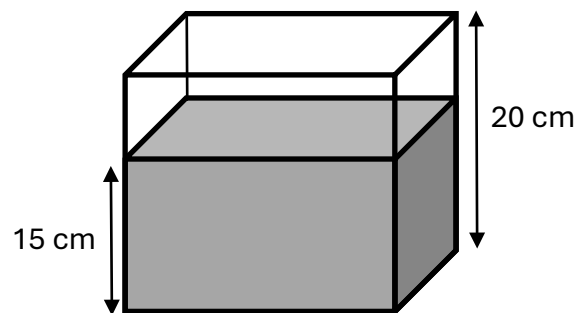
1) Part of a measuring tape is shown. What is the value represented by X?



- (1) 5.502 cm
- (2) 5.504 cm
- (3) 5.52 cm
- (4) 5.54 cm

()

2) The tank with a base area 300 cm^2 is partially filled with water. Find the volume of the water in the tank.



- (1) 300 cm^3
- (2) 1500 cm^3
- (3) 4500 cm^3
- (4) 6000 cm^3

()

3) The first common multiple of 6 and 9 is _____.

- (1) 1
- (2) 18
- (3) 3
- (4) 54

()

4) Find the value of y in $50 + 5y = 110$.

- (1) 12
- (2) 32
- (3) 60
- (4) 72

()

5) Which of the numbers is closest to 1?

- (1) 0.85
- (2) 0.93
- (3) 1.05
- (4) 2.09

()

6)

Carton	Number of toys	Percentage of toys which are defective
A	200	3%
B	300	8%

What percentage of the total number of toys in the cartons A and B are defective?

- (1) 1.2%
- (2) 5.5%
- (3) 6%
- (4) 11%

()

Section B – Short Answer Questions

7) What is the missing number in the box?

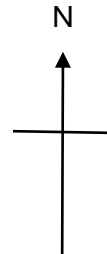
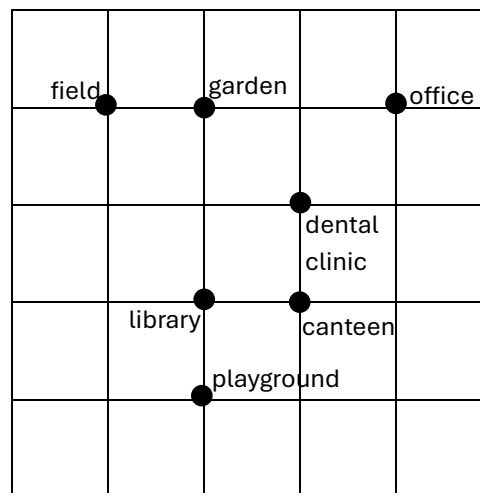
$$9.582 = 9 + 0.2 + \boxed{} + 0.002$$

Ans: _____

8) The average of 4 numbers is 55. Three of the numbers are 0, 25 and 15. What is the 4th number?

Ans: _____

9) The plan of a school is shown in the square grid.



(a) Devi walked directly from the canteen to the field in a straight line.

In which direction did she walk?

Ans: (a) _____

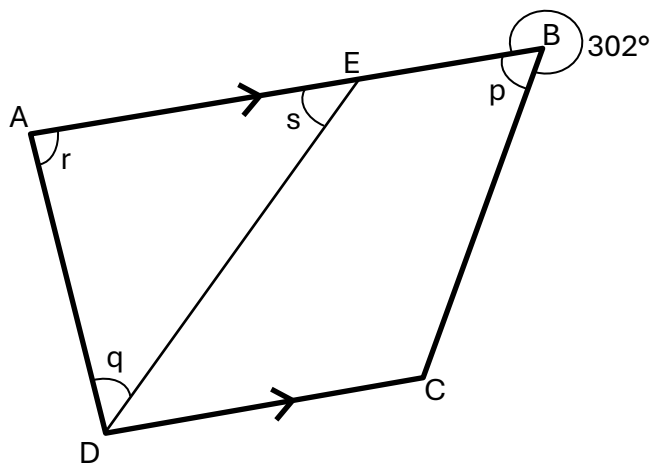
(b) Shi Ling stood at one of the locations facing the library.

After she turned 45° anticlockwise, she faced the dental clinic.

Which location was Shi Ling at?

Ans: (b) _____

10) ABCD is a trapezium. $\angle p = \angle q$. Find the sum of $\angle r$ and $\angle s$.



Ans: _____ $^\circ$